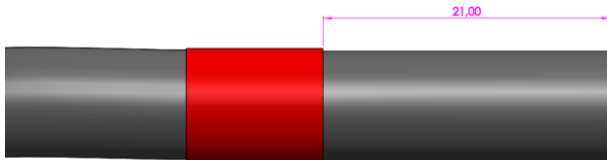
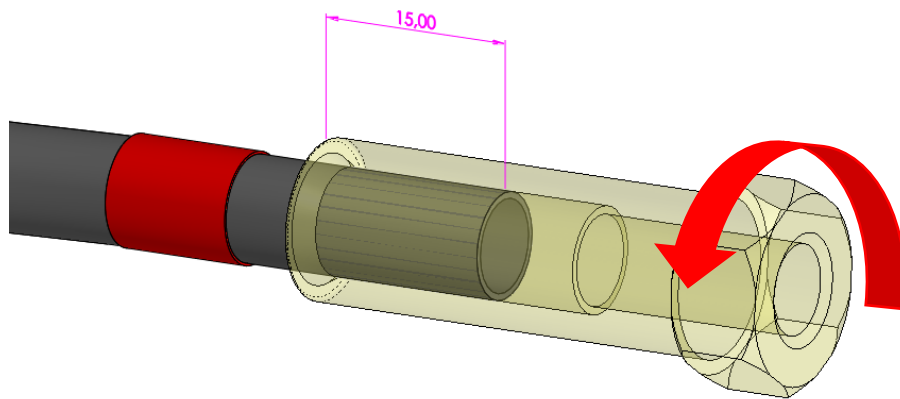


Assembly procedure for reusable stainless steel end caps

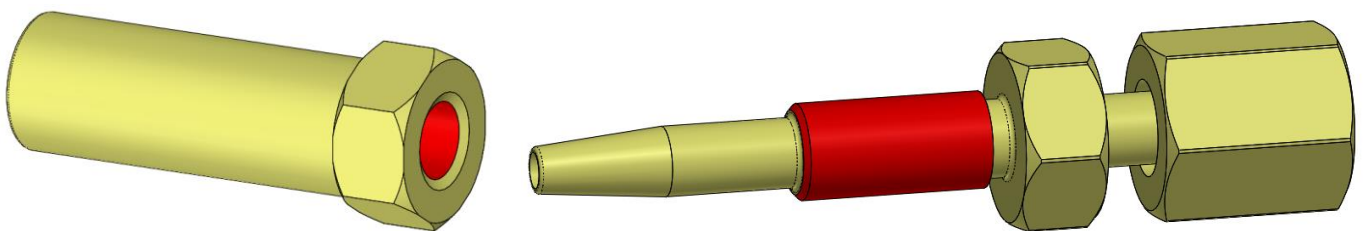
- 1- Using a clean cutter, cut the hose to the desired length, making a clean, perpendicular cut.
- 2- Using a colored pen or tape, mark 21 mm at each end of the hose. This is the length of the hose that will be inserted into the sleeve.



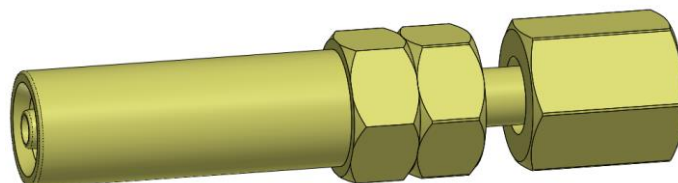
- 3- Place the sleeve at the end of the hose. Turn it counter-clockwise and screw it on about 8-9 turns, i.e. 15 mm, or 6 mm before the mark on the hose.



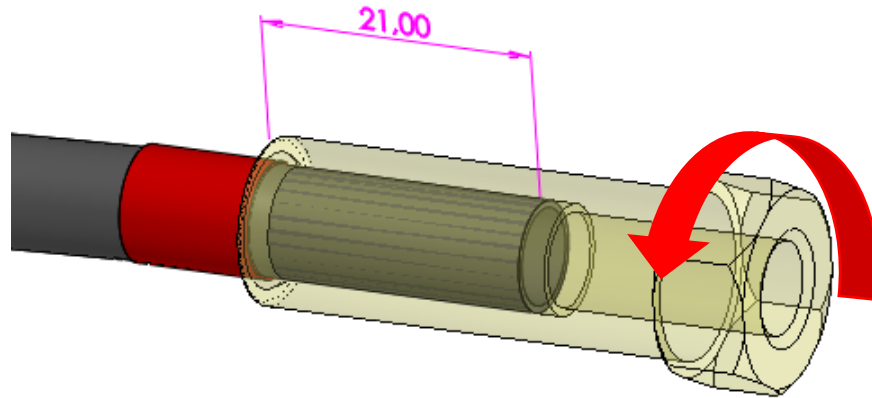
- 4- Lightly grease the M8 thread of the sleeve and the thread of the male insert.



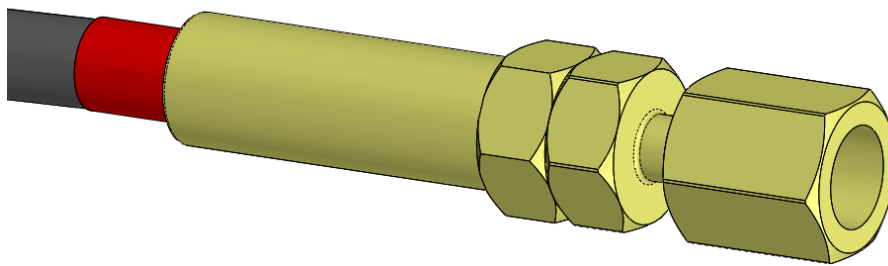
- 5- Completely screw the insert onto the sleeve (clockwise) and loosen it completely.



- 6- Counter-clockwise, screw the sleeve back onto the hose until you reach the mark.



- 7- Screw in the male insert (clockwise) and press it against the sleeve. The hose will move back about 3 to 4 mm, which is normal.



- 8- Repeat these operations at the other end of the hose.

- 9- Your hose is ready to use.